

## Tri-State EMC Honors Local Scholars

Each year, Tri-State EMC recognizes the valedictorians and salutatorians from Fannin County High School, Copper Basin High School and Hiwassee Dam High School. Each of these six scholars receives a \$1,000 scholarship from Tri-State EMC and the Tennessee Valley Authority (TVA) to further his or her education.



We are very proud of these students and their hard work. We wish them all the best in their future endeavors.

Students receiving the 2020 Tri-State EMC/TVA scholarships are:

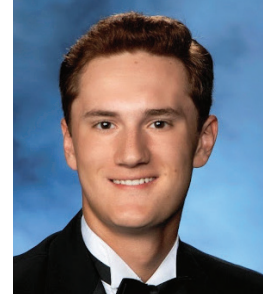
- **Copper Basin High School:** Regan Holder, valedictorian; Anna West, salutatorian
- **Fannin County High School:** Matthew Shirah, valedictorian; Lexi McGill, salutatorian
- **Hiwassee Dam High School:** Gracie Ledford, valedictorian; Spencer Guess, salutatorian



Regan Holder



Anna West



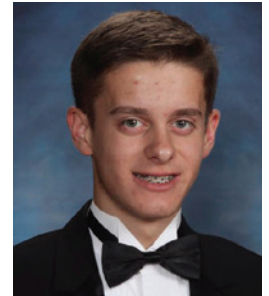
Matthew Shirah



Lexi McGill



Gracie Ledford



Spencer Guess

## Has COVID-19 Affected Your Ability to Pay Your Electric Bill?

In March, Tri-State EMC (TSEM) put a hold on disconnections for nonpayment and late fees until the COVID-19 pandemic was under control and people could go back to work. We felt it was the right thing to do for the health, safety and financial security of our members and employees. TSEM will resume normal operations, including disconnections and penalties on new bills, beginning July 1.

We want to help all our members recover from this crisis. **If you are currently behind on your**

**TSEM electric account, our staff will work with you to set up a payment plan that will work for your family's situation. However, YOU must contact TSEM at (706) 492-3251 to let us know you need this service.** This applies to members with traditional accounts and those using Pre-Pay.

Remember: We are all in this together, and if we all do our part, our lives and the economy will return to normal.

# Tree Trimming Keeps Everyone Safe

If you love the big trees in your yard, you might not want to see Tri-State EMC's tree-trimming crews coming. But keeping trees and other vegetation away from overhead power lines is necessary to keep your neighborhood safe and the electricity on.

It's important to maintain a clearance of 20 feet on each side of the power line so branches, leaves and tree trunks won't touch the wires, even when they sway in the wind. So crews come out every few years to cut branches within an unsafe distance.

Trees and bushes that touch power lines can conduct electricity and interrupt the delivery of power to your house.



In that case, it's probably not hazardous, but your lights might blink on and off. More serious problems occur when trees or branches fall and rip down lines or damage equipment. That can cause a lengthy power outage for your home and all your neighbors' houses.

An even greater concern is when a tree touches a power line, posing a safety hazard to anyone who comes into contact with the tree or the line.

If a tree or other vegetation is growing too close to a power line near your home, give Tri-State EMC a call at (706) 492-3251 so someone can check to see if it needs to be trimmed. A word of caution: Don't trim it yourself. It takes a trained professional to work that close to a power line without getting hurt.

Next time you plant a tree in your yard, consider how tall and wide it will eventually grow. If it potentially will come within 20 feet of a power line, plant it a little farther away.

By law, everyone—including homeowners—must contact 811 by dialing 811 or 1 (800) 282-7411 for Georgia; 1 (800) 351-1111 for Tennessee; or 1 (800) 632-4949 for North Carolina at least 48 hours before beginning any mechanized digging on your property. If you are unsure whether you should notify 811 before you break ground, remember—even if your digging project is small, it's always best to call.



**Know what's below.  
 Call before you dig.**

## How to Raise The Thermostat and Stay Comfortable

It's air-conditioning season, and that means a spike in your family's energy use.

This summer, make an effort to waste less cold air. Three quick do-it-yourself jobs will help:

- 1. Buy an inexpensive caulk gun and caulk around your windows and doors.** Little cracks can be a big energy waster because they let your comfortable, air-conditioned air out of the house.
- 2. Inspect the interior side of your home's exterior walls.** There, you'll find cable and phone cords coming inside. Around them are tiny gaps that double as escape hatches for cool air. They also let hot outdoor air sneak indoors. Caulk around them.
- 3. Add insulation to your attic.** Most homes are built with plenty of attic insulation to keep the hot air that pounds on your roof from finding its way inside. But over time, that insulation deteriorates or gets knocked out of place. If that has happened in your attic, freshen up the insulation.



Then, push the thermostat up to 78 degrees and turn on your ceiling fans. You'll save energy and still feel comfortable.

# Reporting an Outage? There's an App for That

**W**e work hard to ensure your power stays on 24/7, but when outages do occur, we want to make it easy for you to let us know!

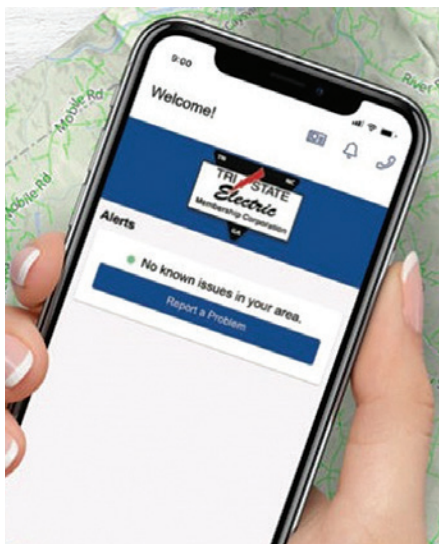
With the Tri-State EMC PowerPal app, you can report a power outage with just a few taps of your fingertip, view multiple accounts and sign up to receive push notifications about power outages and restorations.



Android QR code for PowerPal App



Apple QR code for PowerPal App



## Tri-State EMC

2310 Blue Ridge Drive  
Blue Ridge, GA 30513  
(706) 492-3251

**Find us online:**  
[www.tsemc.net](http://www.tsemc.net)

**Office Hours**  
Mon-Fri, 7:15 a.m.– 4 p.m.  
Closed Saturday and Sunday

**Report outages**  
Call us at (706) 492-3251

### Board of Directors

Jerry Pack  
*President*

Jesse Miller  
*Vice President*

Hugh Rogers  
*Secretary/Treasurer*

Scott Barker  
*Director*

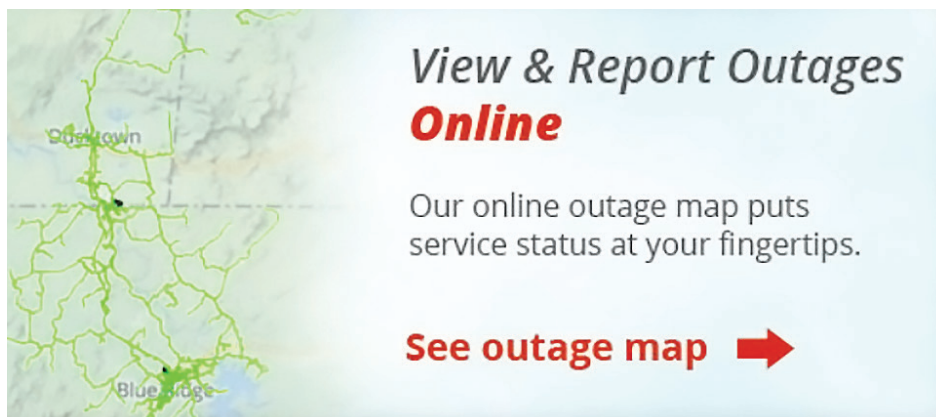
Bill Joe Postell  
*Director*

Jim Quintrell  
*Director*

Tom Stiles  
*Director*

Tri-State Electric Membership Cooperative is a not-for-profit, member-owned power cooperative providing electricity to the people of Cherokee County, NC; Polk County, TN; and Fannin County, GA.

## Tri-State EMC Outage Map



**T**ri-State EMC now has an outage map available to all members on our website at [www.tsemc.net](http://www.tsemc.net). You can view where an outage exists and see the number of members affected. You can report a power outage by entering your account number, phone number or meter number. You may also report an outage through our automated telephone system or by downloading our TSEMC PowerPal app.

The outage map is shown in real-time and allows you to see where outages exist

and may even provide restoration times.

*Updating your phone number on your account is the most important thing you can do to report a power outage.*

With an accurate phone number, our outage system can identify your address when you call, so you can report an outage by simply pressing 2.

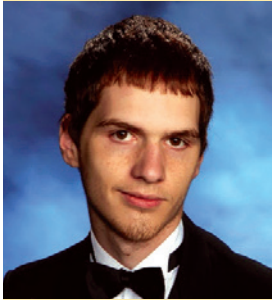
You may update your account information by contacting us through our website [www.tsemc.net](http://www.tsemc.net), by telephone at (706) 492-3251 or in person at our office.



P.O. Box 68 • McCaysville,  
GA 30555 • (706) 492-3251  
[www.tsemc.net](http://www.tsemc.net)

*This institution is an equal opportunity provider and employer.*

# Tri-State EMC Operation Round Up Awards Scholarships to Deserving Students



Isaiah Cargle



Sterling Harding



Isaac Leslie

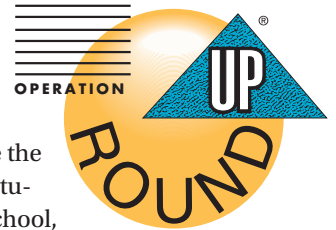
Scholarships recently awarded to vocational students at four local schools are a great example of how Operation Round Up funds are used. Each of these students received a \$500 scholarship:

- **Fannin County High School:** Isaiah Cargle
- **Hiwassee Dam High School:** Sterling Harding
- **Copper Basin High School:** Isaac Leslie
- **Mountain Education Charter School:** Name and photo not available at presstime.

All of the money collected through Operation Round Up (ORU) goes to nonprofit groups, charities and school systems in the Tri-State EMC (TSEMC) service area. The money comes from TSEMC members who round up their bill to the next dollar.

Once a month, the Tri-State EMC Foundation Board considers grant requests and distributes the money. In 2013, the Operation Round Up board made the decision to grant one vocational student from Fannin County High School, Copper Basin High School, Hiwassee Dam High School and Mountain Education Charter School each a \$500 scholarship. The ORU board elected to allow each school's scholarship committee to choose the recipient of the scholarship.

Thank you to all of the Tri-State EMC members who participate in Operation Round Up to make this scholarship possible.



## Energy Efficiency Tip of the Month

Spending more time at home? Try an online energy audit to assess the overall efficiency of your home. Visit [www.energystar.gov](http://www.energystar.gov), then enter "home energy yardstick" in the search box to get started.



## TSEMC Holiday Closing

Tri-State EMC will be closed Friday, July 3, in observance of Independence Day.